



Welcome to HPC

**BRASIL
EXPORT**
FÓRUM NACIONAL DE LOGÍSTICA,
INFRAESTRUTURA E TRANSPORTES

PCS – Port Community Systems

October 2024 | Marcelo D'Antona, Brazil



HPC is owned by

HHLA

1885

Founded as
Hamburger Freihafen
und Lagerhaus
Gesellschaft

Stock-listed since 2007

Port of Hamburg
TOP 20
PORTS
Globally

No. 3 in Europe

#5.9 million
TEU

Container
Throughput in 2023

Largest container
terminal operator
in Germany



6,700

Employees



1st automated &
climate-neutral

Container terminal



SHAREHOLDERS

City of
Hamburg **69 %**

Private **31 %**

Revenues
#1.45
billion €

Servicing top
#10 of carriers



A start-up since 1885: HHLA

Hamburg's now world-famous Speicherstadt.



The containers change everything

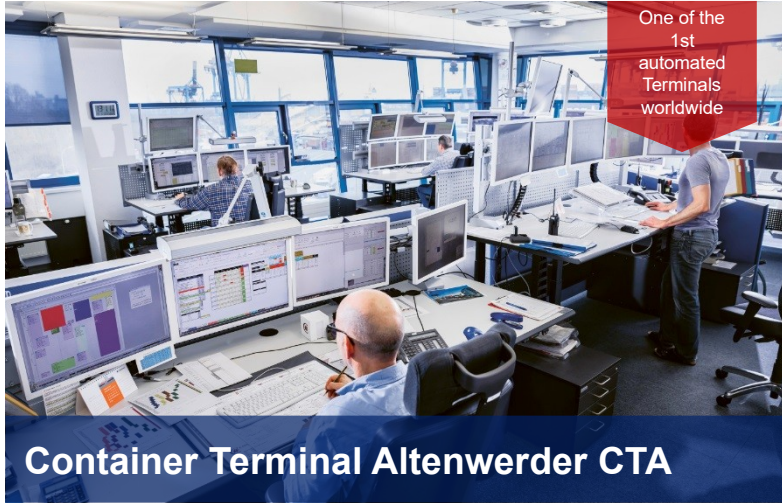


Welcome to HPC
© HPC Hamburg Port Consulting GmbH

Leading European container terminal operator



With a throughput of 7.6 m TEU with state-of-the-art handling technology



45+ Years of Excellence – what we have achieved

Anchored in operations

1,800

Projects in

130 COUNTRIES



1976

Founded as subsidiary
of HHLA

1st

FULLY AUTOMATED

Terminal of scale.
Doubled capacity
on the same
footprint



100

ENTHUSIASTS



With background
from port and
terminal operations
and software

GREEN TRANSITION

Alternative
energies



140+

projects

OPTIMISATION

Improved operational
excellence and
reduced costs



180+ PORTS

And terminals
planned and
optimised



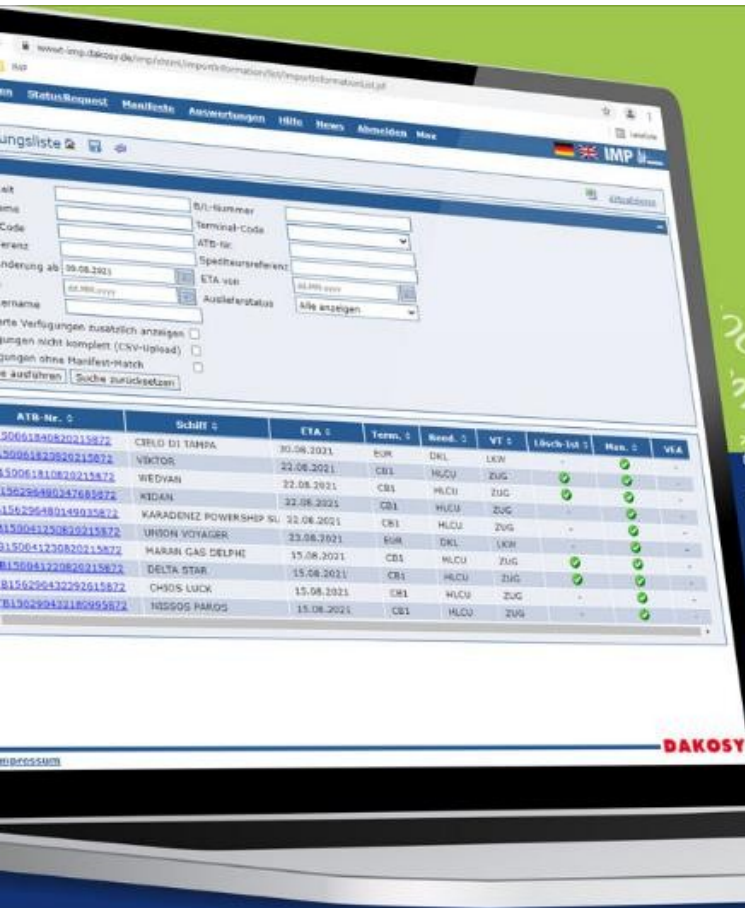
Hinterland connectivity

120 projects implemented for intermodal rail terminals,
inland ports and warehouse logistics



Developed *HPC Ukraina* (now HHLA
CTO) as terminal operator in Odessa

The Port Community System for the Port of Hamburg



We digitize
logistics!



DAKOSY

Company profile

DAKOSY

DAKOSY Datenkommunikationssystem AG

Established: 1982, with the aim of staying ahead of competition from other seaports

Employees: + 200 employees

What it does: operates the Port Community System (PCS) for the Port of Hamburg and the Cargo Community System (FAIR@Link) for Frankfurt and Hamburg Airports,

Shareholder: Seaport Industry of Hamburg

Turnover: 32 million Euro

Clients: +3.000

Volumes: 1.4 billion messages



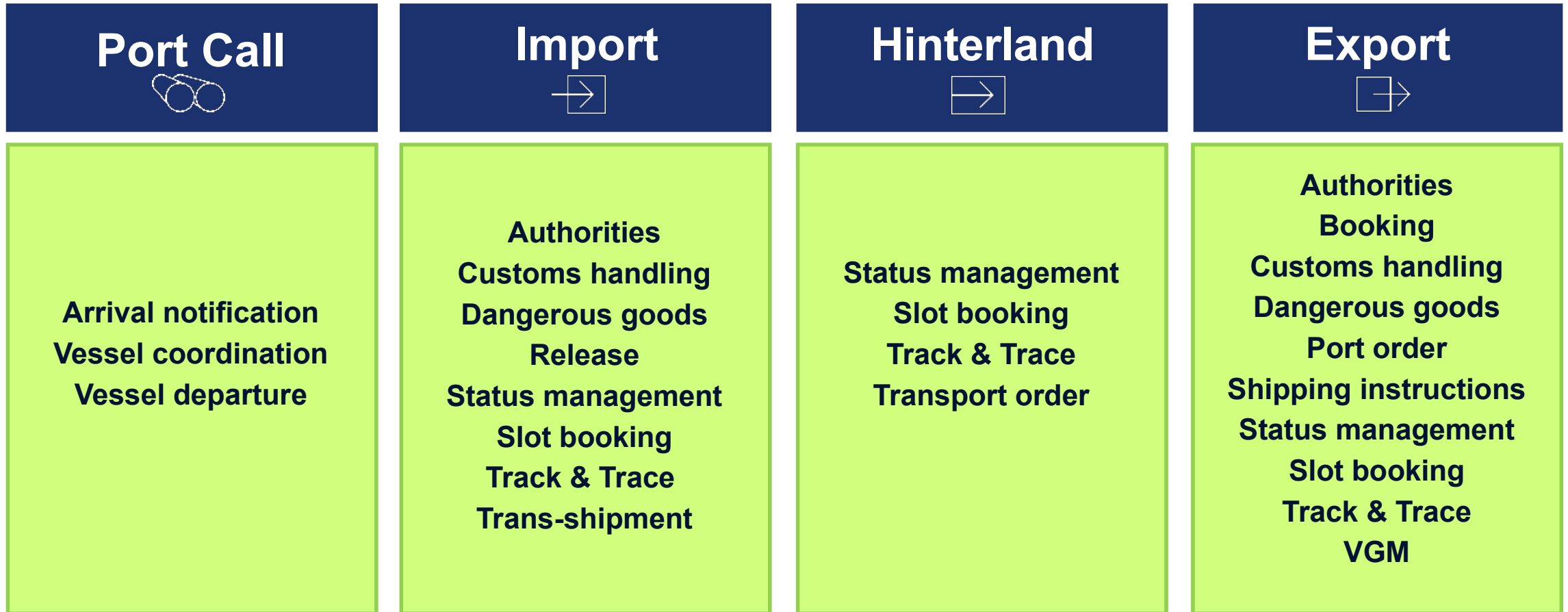
Shareholder structure

DAKOSY Datenkommunikationssystem AG



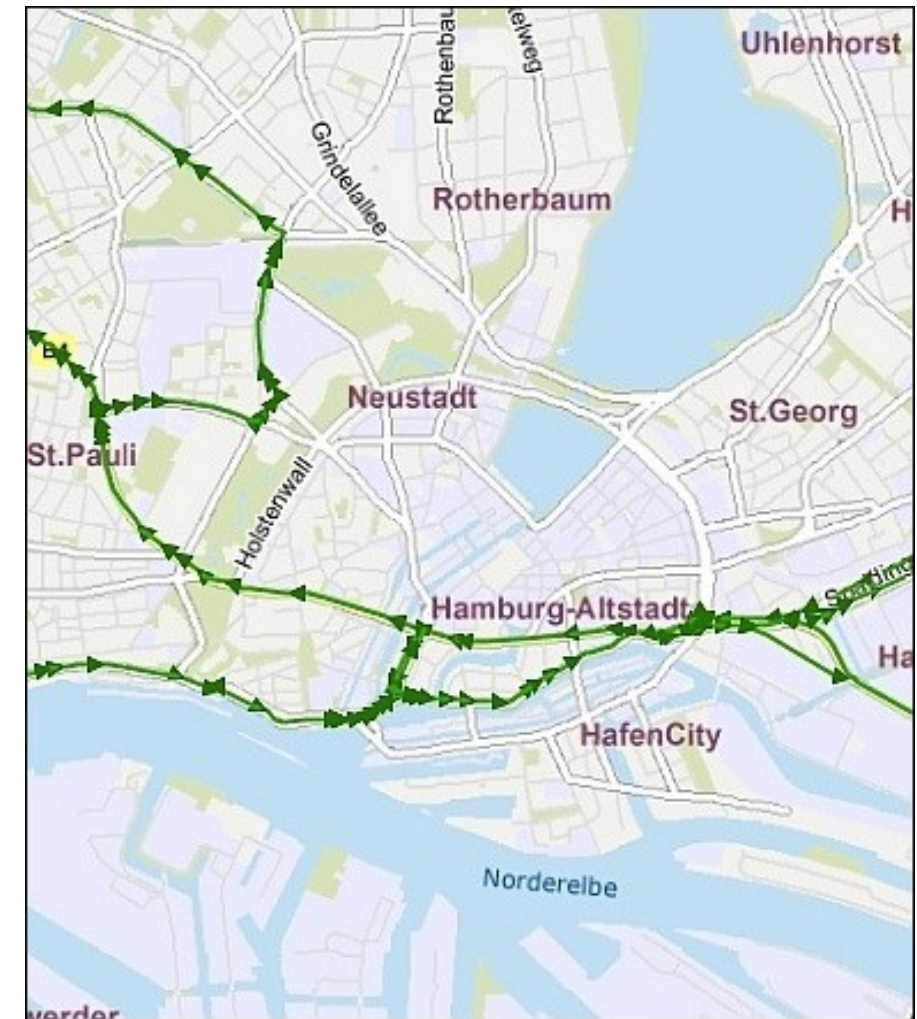
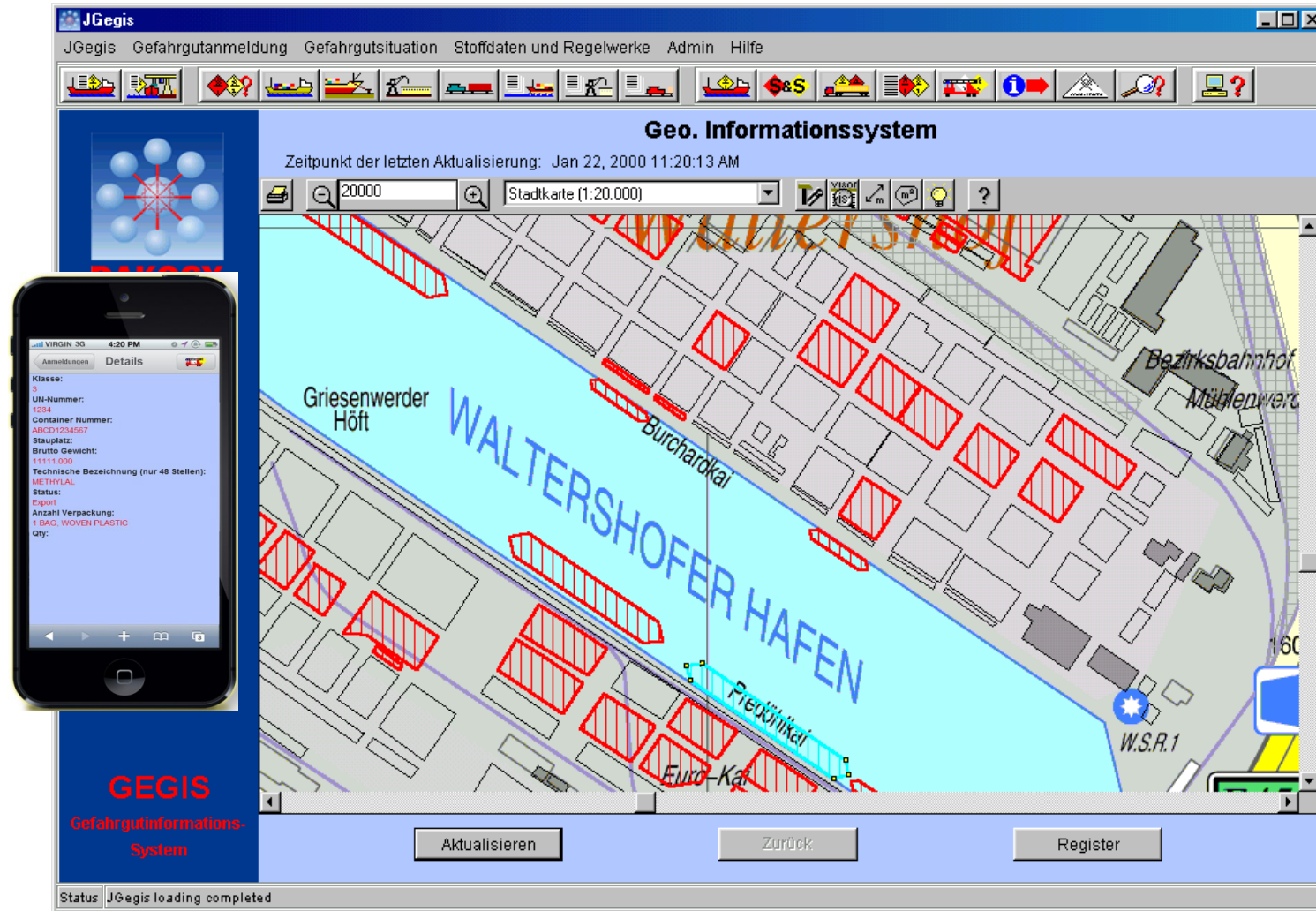
Port Community System Hamburg

▪ Four pillars to support



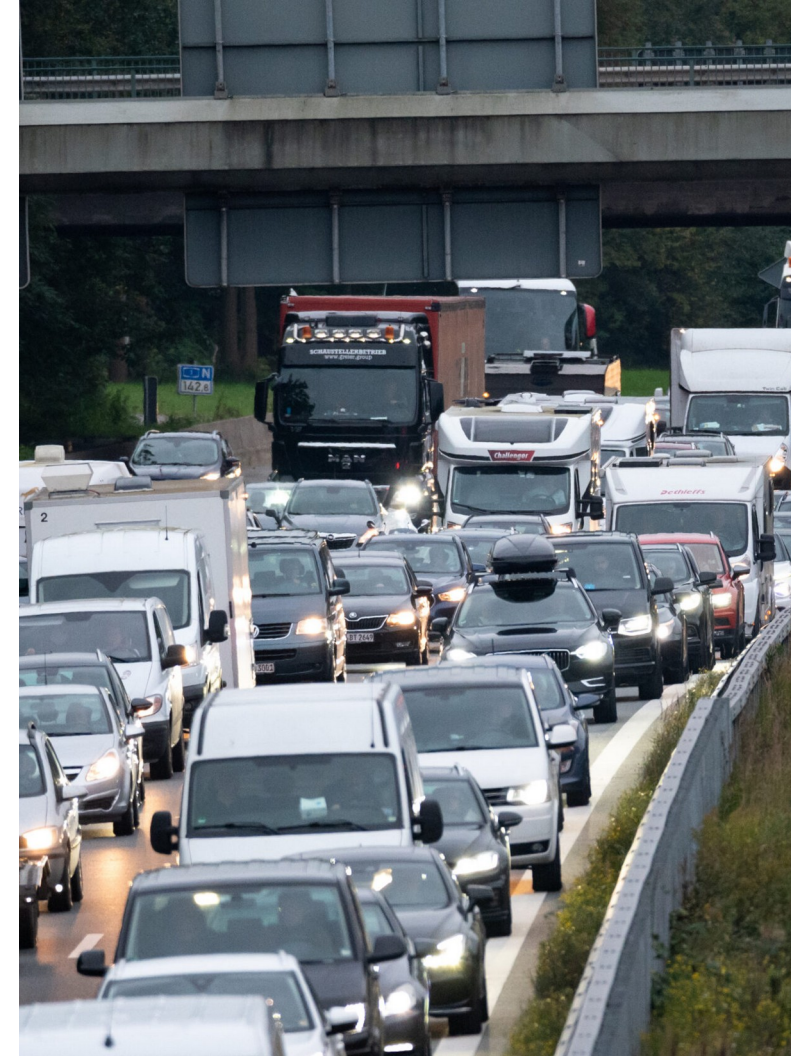
Port Community System Hamburg

Overview of all dangerous goods movements and storages in the port.



Port Community System Hamburg

Tackling congestion without investing in infrastructure



Port Community System Hamburg

▪ Slot booking



- Earlier system on a voluntary basis since 1996
- Mandatory introduction of pre-announcement at HHLA and Eurogate terminals in November 2016
- Mandatory introduction of slot booking at HHLA and Eurogate terminals in November 2017
- Today in use at six container terminals, three empty container depots, two veterinary offices; since mid-August also at the Customs container inspection facility
- Over 400 trucking companies are connected via software packages
- More than 15,000 drivers use the free Truckgate app
- Approx. 12,000 trucks/day and 1 million EDI messages/day



➔ **Software:** slot.truckgate.de

➔ **Noteworthy:** Development and operation commissioned by HHLA and Eurogate

Port Community System Hamburg

Current capacity utilization via slot.truckgate.de

TRUCKGATE 

Öffentlicher Bereich ? Hilfe

Auslastungsanzeige

Terminals Alle ▾

Termine ab/am 01.09.2021 

Spezialslots

Zeilenansicht

Bereiche einblenden

[Aktualisieren](#)

Termine am 01.09.2021, Stand 11:01:12

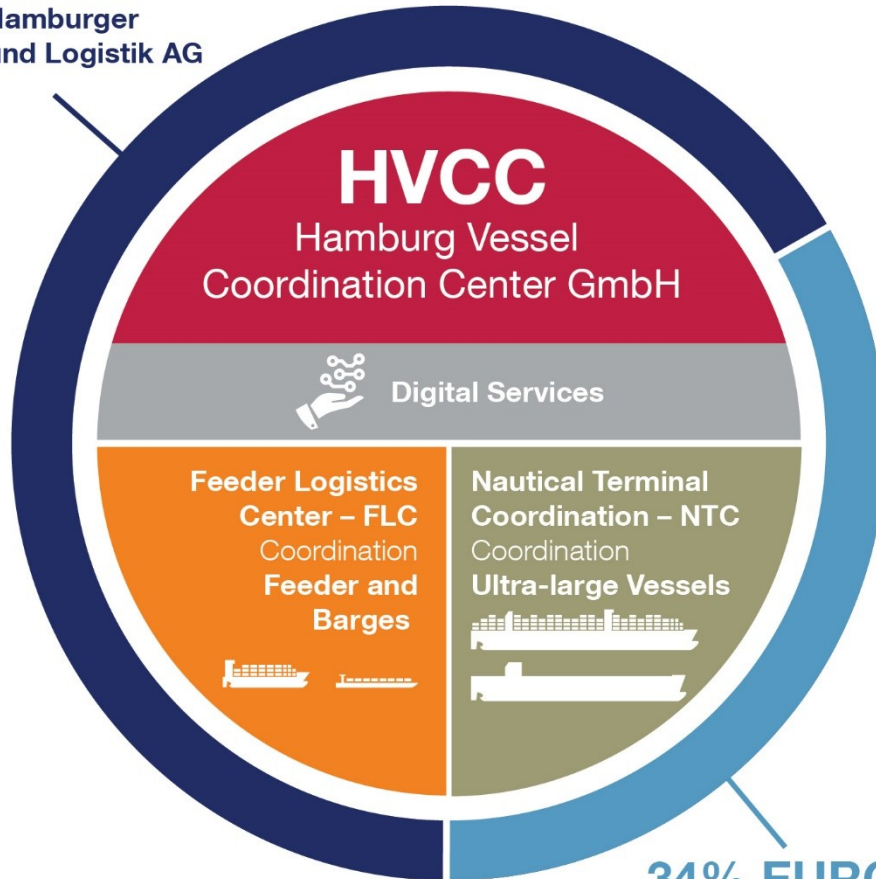
Std	Eurogate CTH standard	Eurogate EKOM standard	HHLA CTA standard	HHLA CTB standard	HHLA CTT standard	SWT standard	CPA Hamburg (Pilotphase) standard	VETI Altenwerder Kirchtal standard	VETI Reiherdamm standard	CMR standard	CCIS Germany standard
00:00	00	00	00	00	00	00	00	00	00	00	00
01:00	01	01	01	01	01	01	01	01	01	01	01
02:00	02	02	02	02	02	02	02	02	02	02	02
03:00	03	03	03	03	03	03	03	03	03	03	03
04:00	04	04	04	04	04	04	04	04	04	04	04
05:00	05	05	05	05	05	05	05	05	05	05	05
06:00	06	06	06	06	06	06	06	06	06	06	06
07:00	07	07	07	07	07	07	07	07	07	07	07
08:00	08	08	08	08	08	08	08	08	08	08	08
09:00	09	09	09	09	09	09	09	09	09	09	09
10:00	10	10	10	10	10	10	10	10	10	10	10
11:00	11	11	11	11	11	11	11	11	11	11	11
12:00	12	12	12	12	12	12	12	12	12	12	12
13:00	13	13	13	13	13	13	13	13	13	13	13
14:00	14	14	14	14	14	14	14	14	14	14	14
15:00	15	15	15	15	15	15	15	15	15	15	15
16:00	16	16	16	16	16	16	16	16	16	16	16
17:00	17	17	17	17	17	17	17	17	17	17	17
18:00	18	18	18	18	18	18	18	18	18	18	18
19:00	19	19	19	19	19	19	19	19	19	19	19
20:00	20	20	20	20	20	20	20	20	20	20	20
21:00	21	21	21	21	21	21	21	21	21	21	21
22:00	22	22	22	22	22	22	22	22	22	22	22

Unique selling point of Port of Hamburg

Overview organisational structure of HVCC



66% HHLA
HHLA Hamburger
Hafen und Logistik AG



34% EUROGATE
Eurogate Container
Terminal Hamburg GmbH



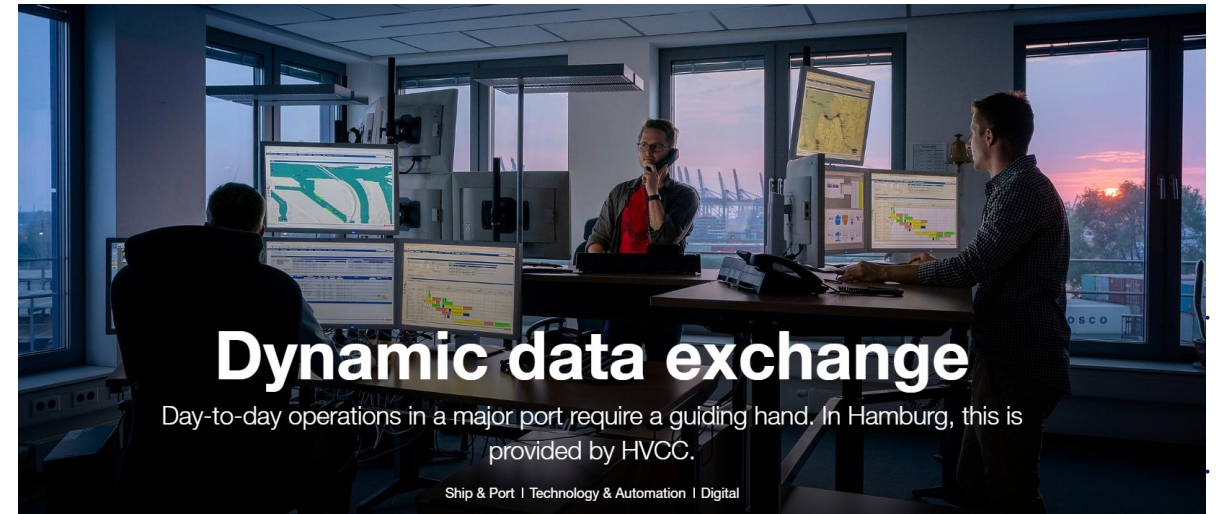
- Joint-venture of two competing terminal operators



- 24/7 operational / single point of contact for all partners



- Operational traffic planning for large size vessels



Dynamic data exchange

Day-to-day operations in a major port require a guiding hand. In Hamburg, this is provided by HVCC.

Ship & Port | Technology & Automation | Digital



Vessel Coordination Centre – HVCC Services Reducing Emissions

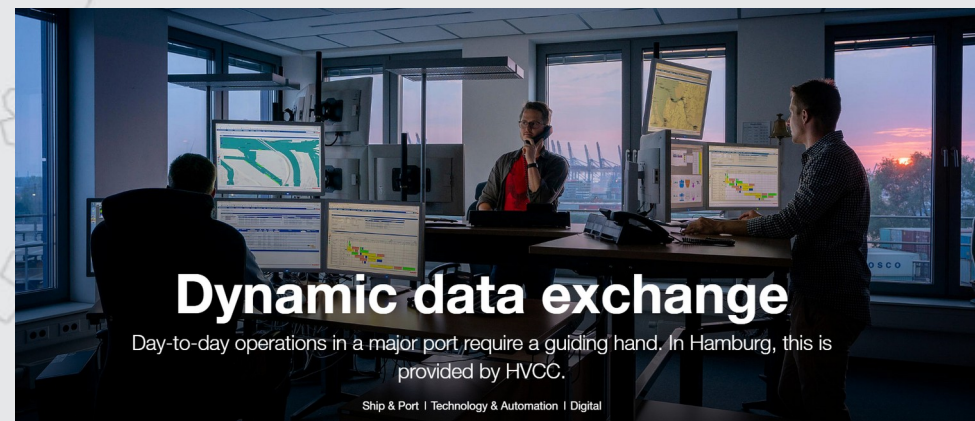
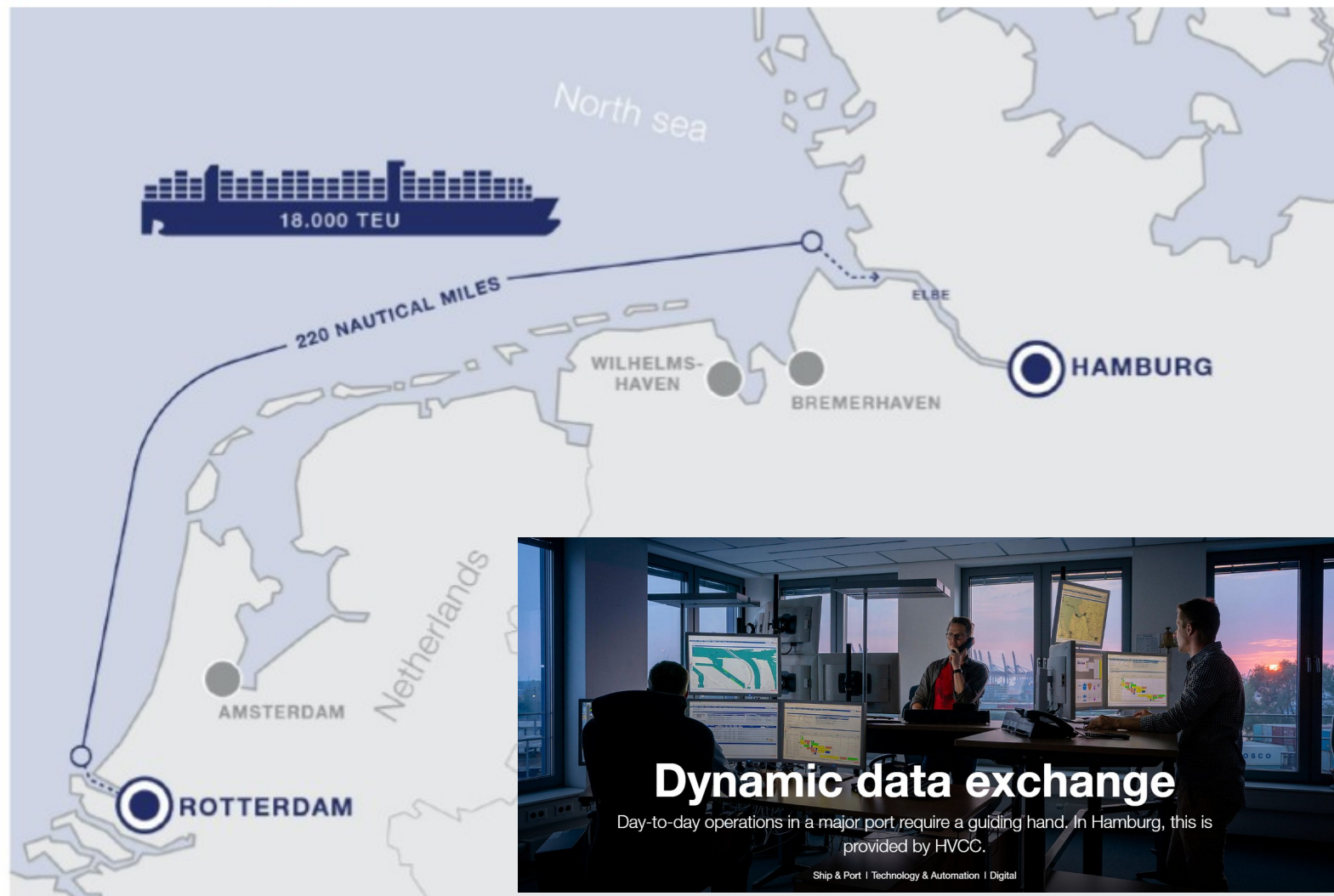
HVCC helps vessels to sail at optimal speed to arrive just-in-time



HVCC saved
84,000 t
of fuel for shipping lines

Reducing fuel costs by
30m USD

Cutting CO2 emissions
284,000 t



HOW CAN WE HELP TO FUTURE- PROOF YOUR PORT?



Marcelo D'Antona

HPC Hamburg Port Consulting GmbH
Breite Str. 61
22767 Hamburg

📞 +55 (11) 99926-4039
✉ m.dantona@hpc-hamburg.de
🌐 www.hpc-hamburg.de

